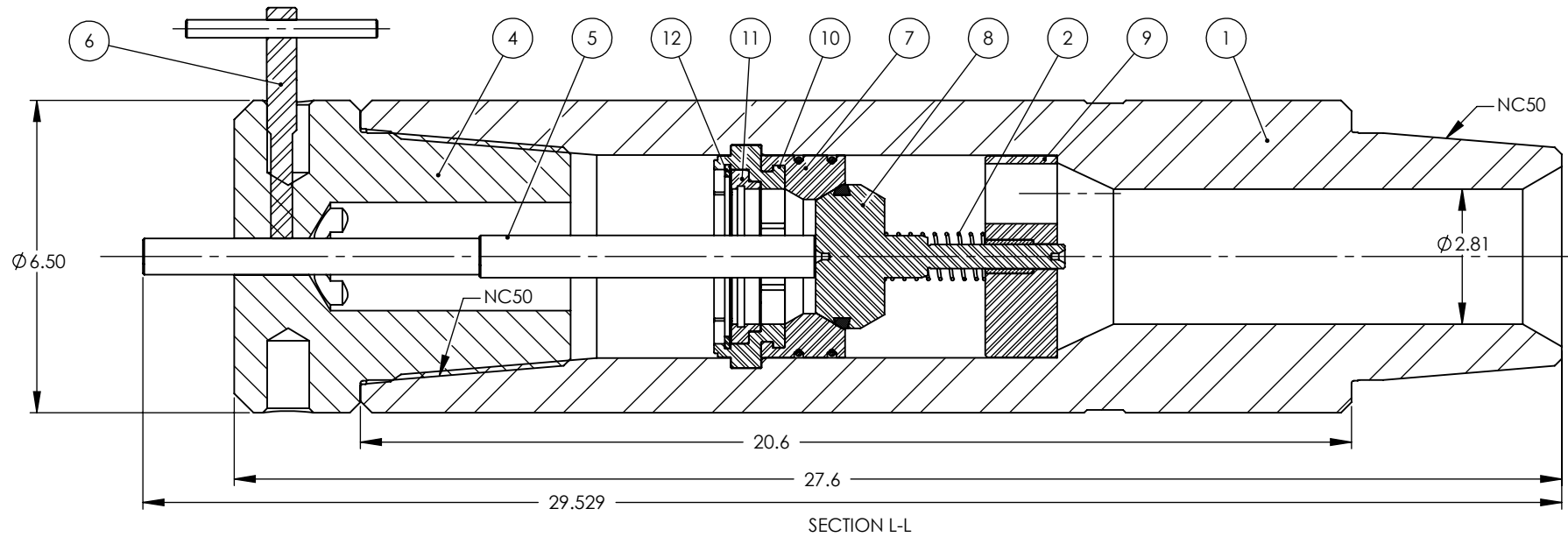
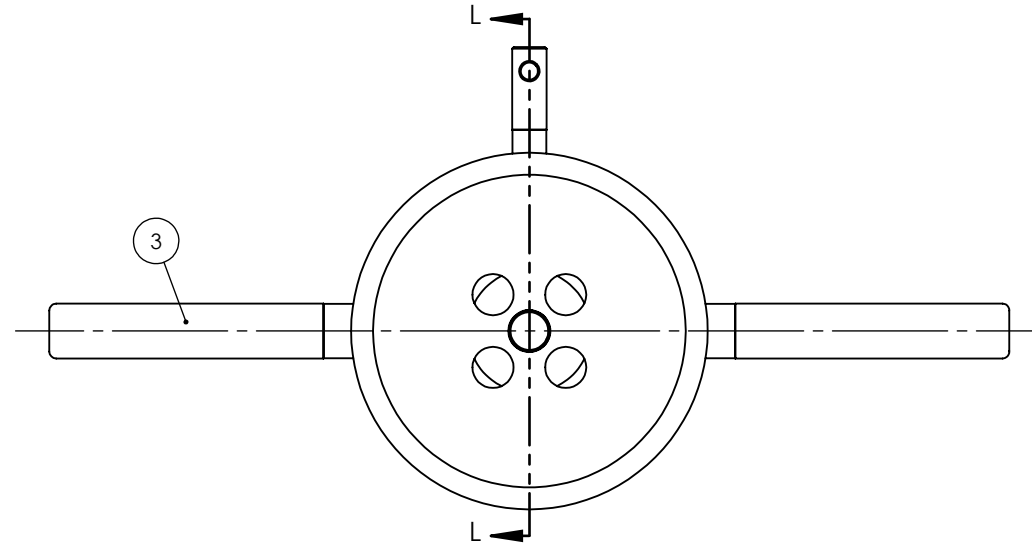


ITEM NO.	QTY.	PART NO.	DESCRIPTION
1	1	D4-A-01-IF	BODY
2	1	D-401014	COIL SPRING
3	2	D-40108	HANDLE
4	1	D-40109-IF	TOP CAP
5	1	D-20116	RELEASE SHAFT
6	1	D-40117	RELEASE SHAFT SCREW
7	1	D4-A-02-SS	DART SEAT
8	1	D4-A-03-MS	DART
9	1	D4-A-04	DART GUIDE
10	1	4100-E-03	SPLIT RING
11	1	4100-E-02	LOCK RING
12	1	WHTA-362-INX	RETAINER RING
14	1	D4-IBOP-SK	SEAL KIT



NOTES:

DATE:	06/08/10	ASSEMBLY NO:	IBOP-45IF-SERIES
DRAWN BY:	TS	DESCRIPTION:	DART IBOP
CHECKED BY:	TH	WORKING PRESSURE:	10,000 PSI
APPROVED BY:	TH	MAJOR REPAIR KIT:	-
SHEET NO:	1/1	WEIGHT:	212 LBS
ALL DIMENSIONS IN INCHES		DWG SCALE:	NOT TO SCALE



**HI-KALIBRE
EQUIPMENT LTD.**

9816 - 45A AVENUE PHONE: (780) 435-1111
EDMONTON, AB FAX: (780) 436-5164
T6E 5C5 CANADA EMAIL: hke@hikalibre.com

THIS DRAWING IS PROPERTY OF HI-KALIBRE EQUIPMENT LTD.
AND MUST BE RETURNED ON DEMAND. THIS PRINT IS LOANED
IN CONFIDENCE WITH UNDERSTANDING THAT IT IS NOT TO BE
REPRODUCED OR DISCLOSED, IN THE WHOLE OR IN PART, WITHOUT
WRITTEN CONSENT FROM HI-KALIBRE EQUIPMENT LTD. HI-KALIBRE
EQUIPMENT LTD RESERVES ALL RIGHTS OF DESIGN AND INVENTION